



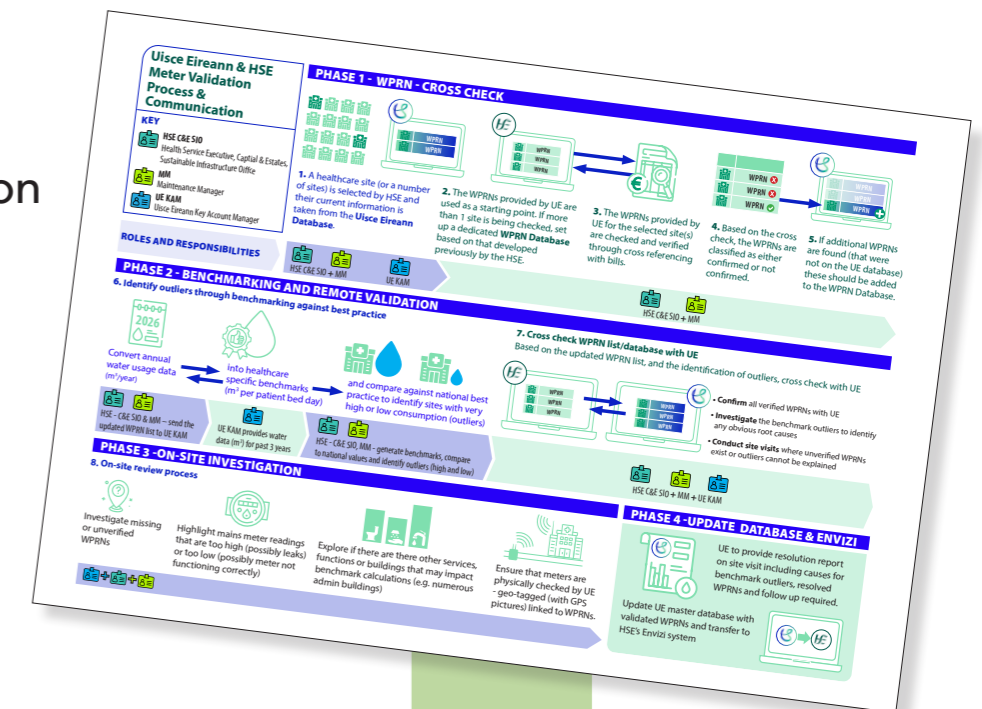
Uisce Éireann & HSE Meter Validation Process & Communication

In order for the HSE and individual healthcare sites to have accurate and up to date water consumption data, it is essential that the Water Point Reference Numbers (WPRNs) for each site are correct. When Uisce Éireann was instituted, it had to combine multiple WPRN databases from all local authorities into one national dataset. Due to a combination of issues (e.g. differing procedures used by local authorities when setting up new connections, different naming methods, old WORNs not removed from the system) there can be inconsistencies in the WPRNs assigned to HSE sites on the UE database.

The following outlines the WPRN verification process developed through collaboration between the HSE's Climate and Estates Sustainable Infrastructure Office and Uisce Éireann. This process was applied to the largest water consuming healthcare sites in Ireland namely those that fall into the UE water consumption Bands 4 and 3:

- **Band 4 (Between $>250,000\text{m}^3 < 2,300,000\text{m}^3$)**
- **Band 3 ($>20,000 < 250,000 \text{ m}^3$ per year) – majority of Acute & large Community Hospitals**

Applying this process will help ensure that the WPRNs assigned to healthcare sites are accurate, active, correctly attributed, and suitable for benchmarking and reporting.

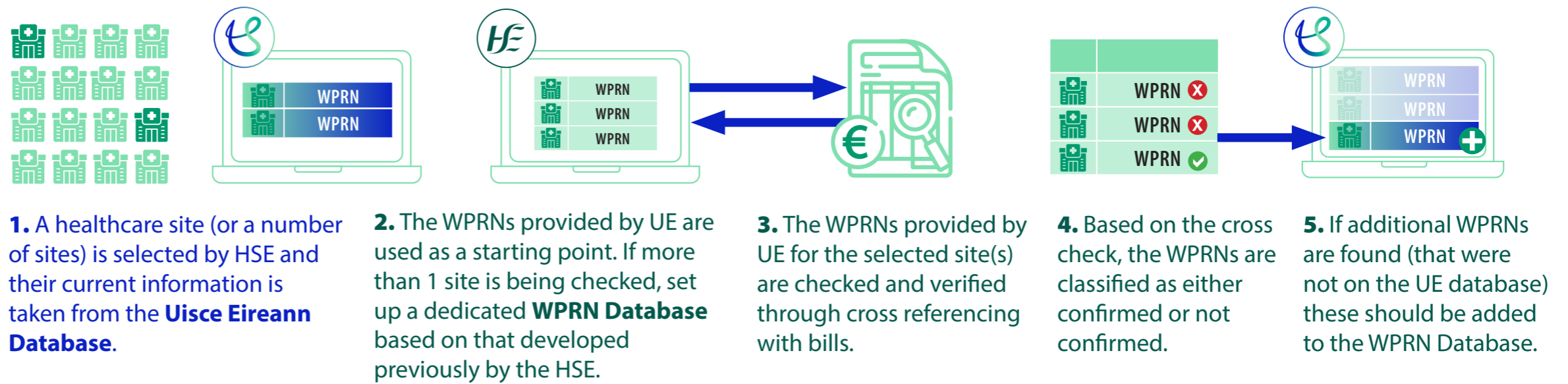


Uisce Eireann & HSE Meter Validation Process & Communication

KEY

- HSE C&E SIO**
Health Service Executive, Capital & Estates, Sustainable Infrastructure Office
- MM**
Maintenance Manager
- UE KAM**
Uisce Eireann Key Account Manager

PHASE 1 - WPRN - CROSS CHECK

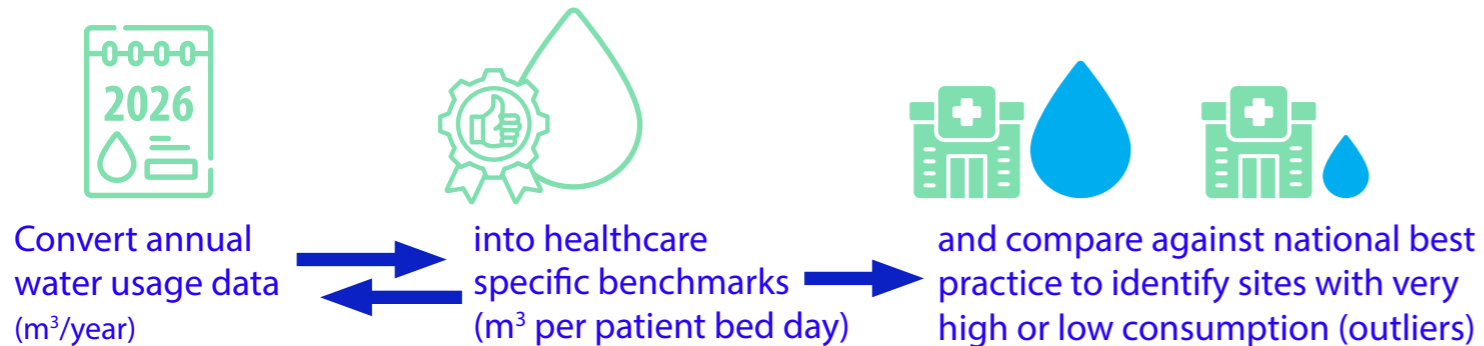


ROLES AND RESPONSIBILITIES



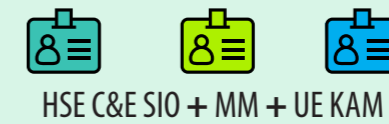
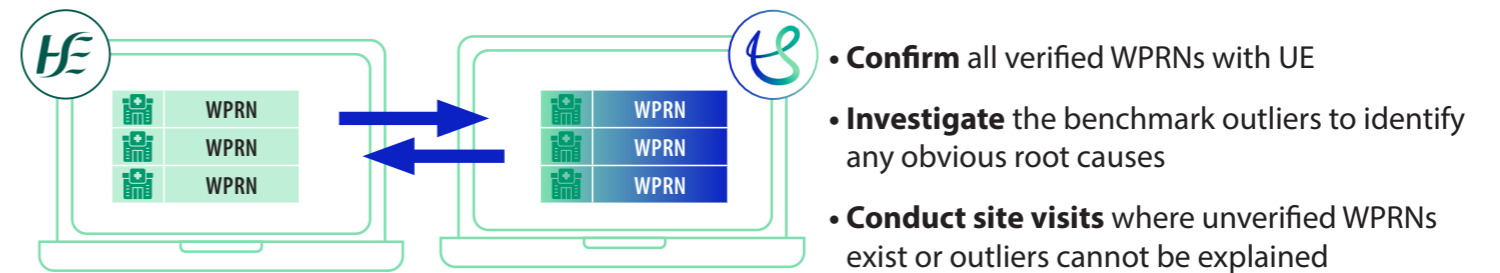
PHASE 2 - BENCHMARKING AND REMOTE VALIDATION

6. Identify outliers through benchmarking against best practice



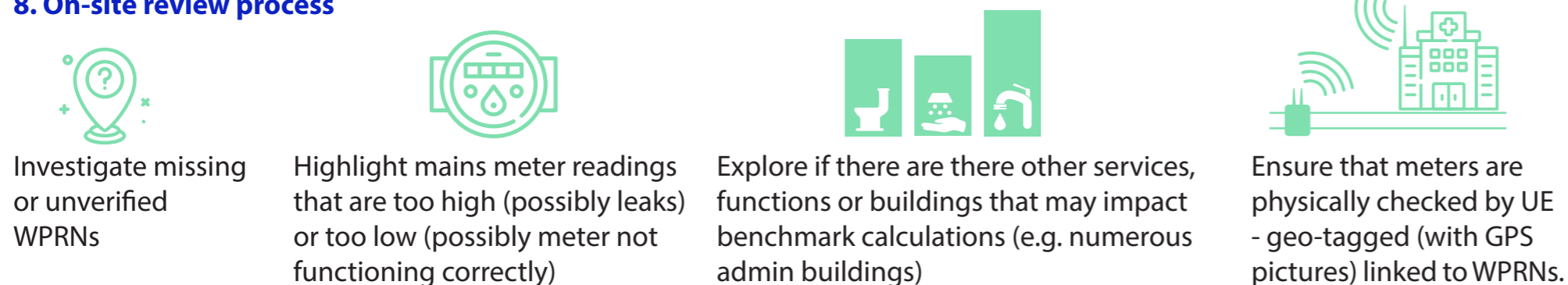
7. Cross check WPRN list/database with UE

Based on the updated WPRN list, and the identification of outliers, cross check with UE



PHASE 3 - ON-SITE INVESTIGATION

8. On-site review process



PHASE 4 - UPDATE DATABASE & ENVIZI



UE to provide resolution report on site visit including causes for benchmark outliers, resolved WPRNs and follow up required.

Update UE master database with validated WPRNs and transfer to HSE's Envizi system

