

Swords Office

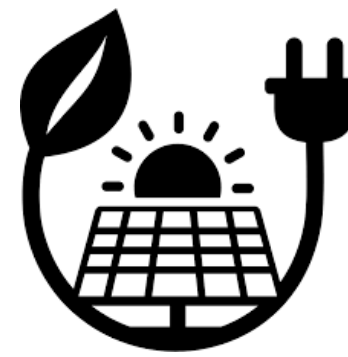
St. Ita's, Knockamann

Road to Decarbonisation



We're taking climate action

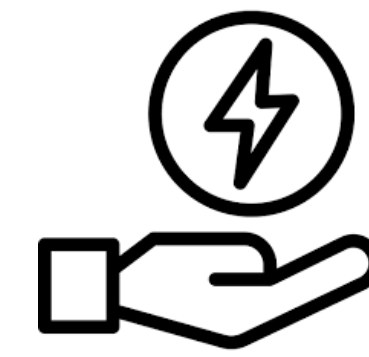
Knockamann Centre provides services for adults with an intellectual disability and a mental health diagnosis



Renewable Energy



Lighting Upgrades



Behavioural Change

The integration of Solar PV, Lighting Upgrades and Behavioural Change Initiatives on the St. Ita's campus has yielded valuable insights and lessons that can inform future sustainability efforts.

Behavioural Change

Saving: 2,000 kWh / year

LED Street Lighting

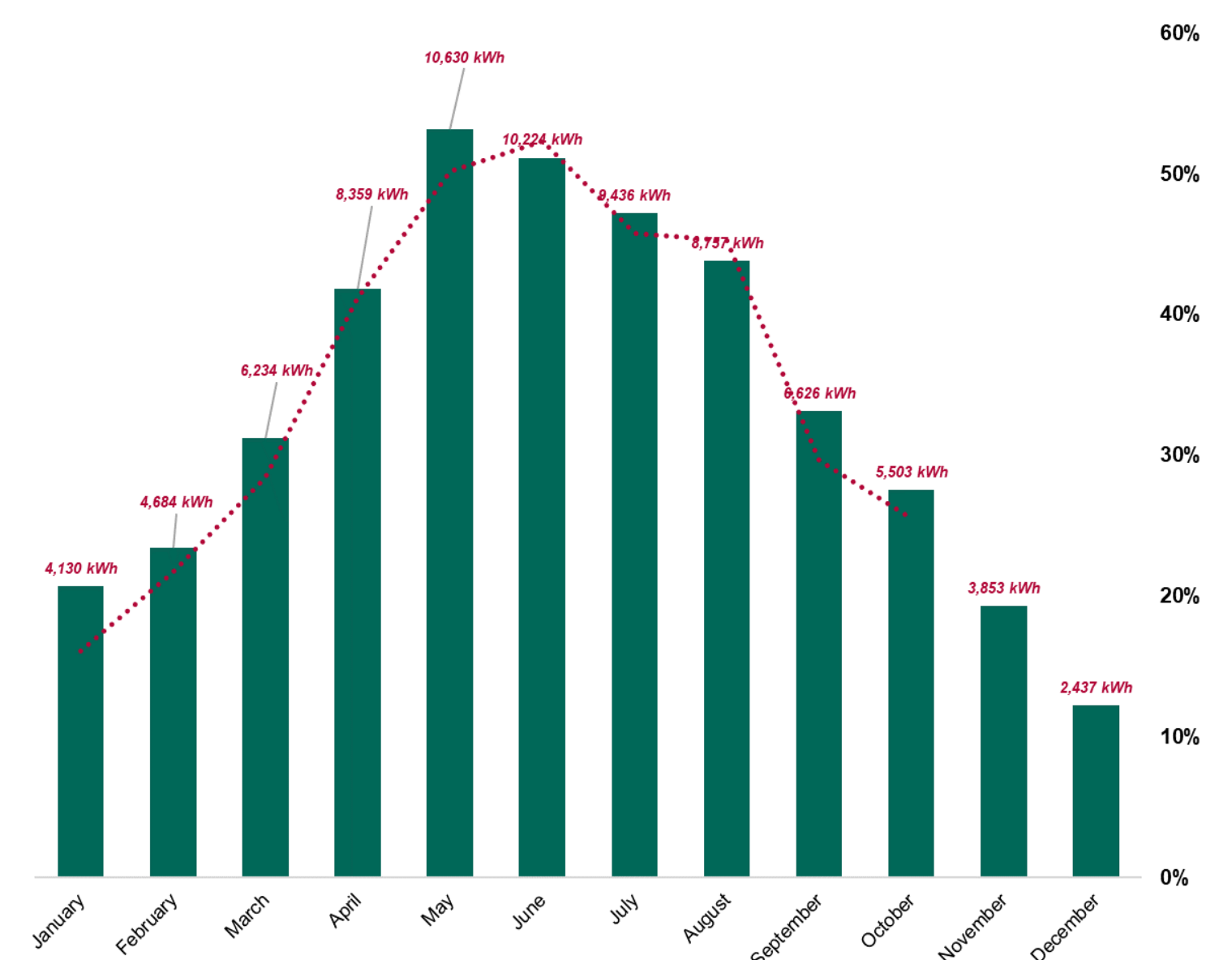
Saving: 4,000 kWh / year

House 1 LED Lighting

Saving: 6,000 kWh / year

Solar PV

Annual Saving: 64,000 kWh



10 kWp of Solar PV Installed on 8 Houses & Resource Centre (2022)

Generates between **16% and 52%** of the total electricity demand

81,153 kWh of electricity generated

24.9 Tonnes of CO2 Emissions offset

Energy Costs



7 %

€ 7,987 per year

Electricity Consumption



50 %

174,028 kWh reduction from 2016

Gas Consumption



3 %

35,202 kWh Increase from 2016

CO₂ Emissions



49.5%