

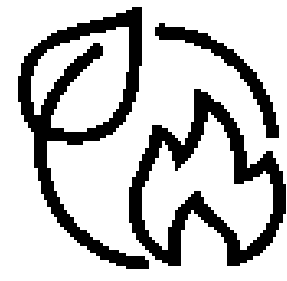
Built in 1930s as a Mental Health facility. Currently, it mostly serves a HSE admin function, with some health services also.

A number of Energy Projects were carried out on site from 2019 to 2022.



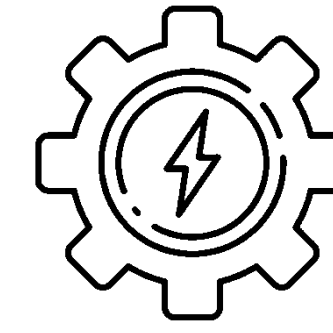
**Lighting Upgrade**

Capital Cost: €102,074  
Saving: 121,000 kWh/yr



**Steam Boiler Retrofit**

Capital Cost: €72,276.8  
Saving: 295,552 kWh/yr



**Pump Upgrades**

Capital Cost: €22,047  
Saving: 89,705 kWh/yr

### Heating System Re-zoning and Heat Pump Integration: 2022 to 2024

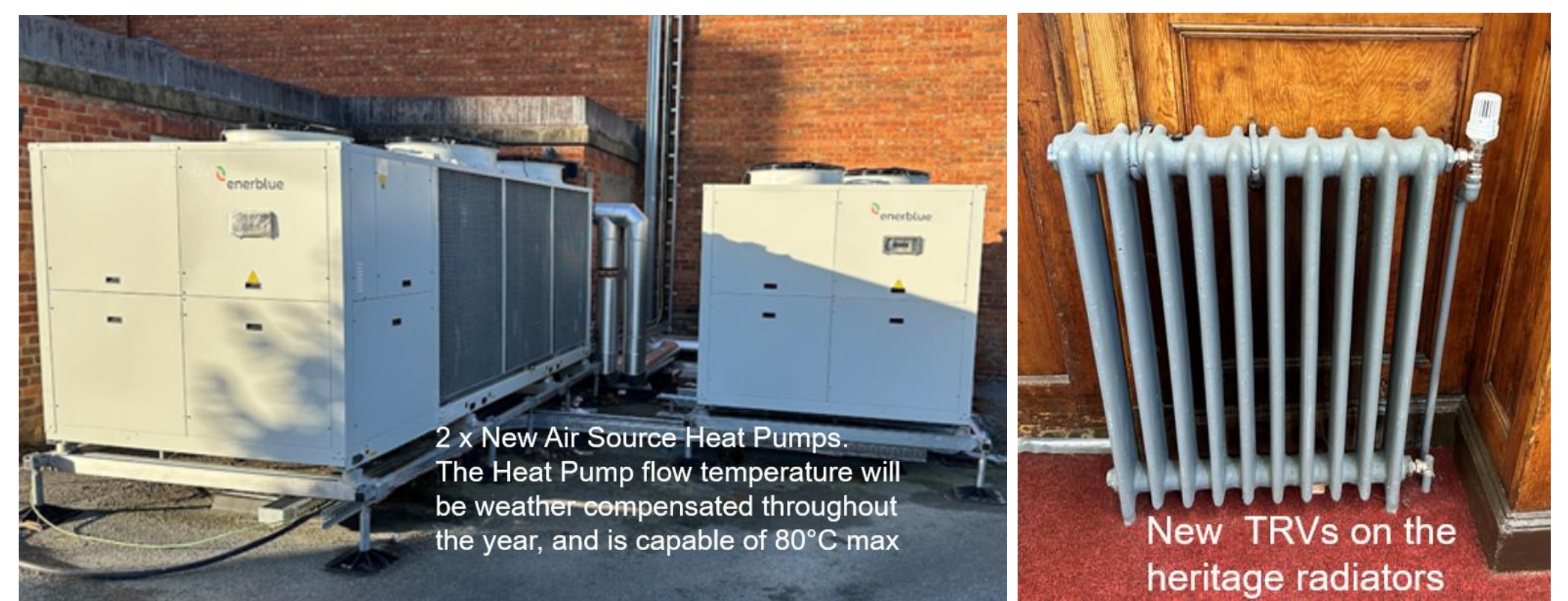
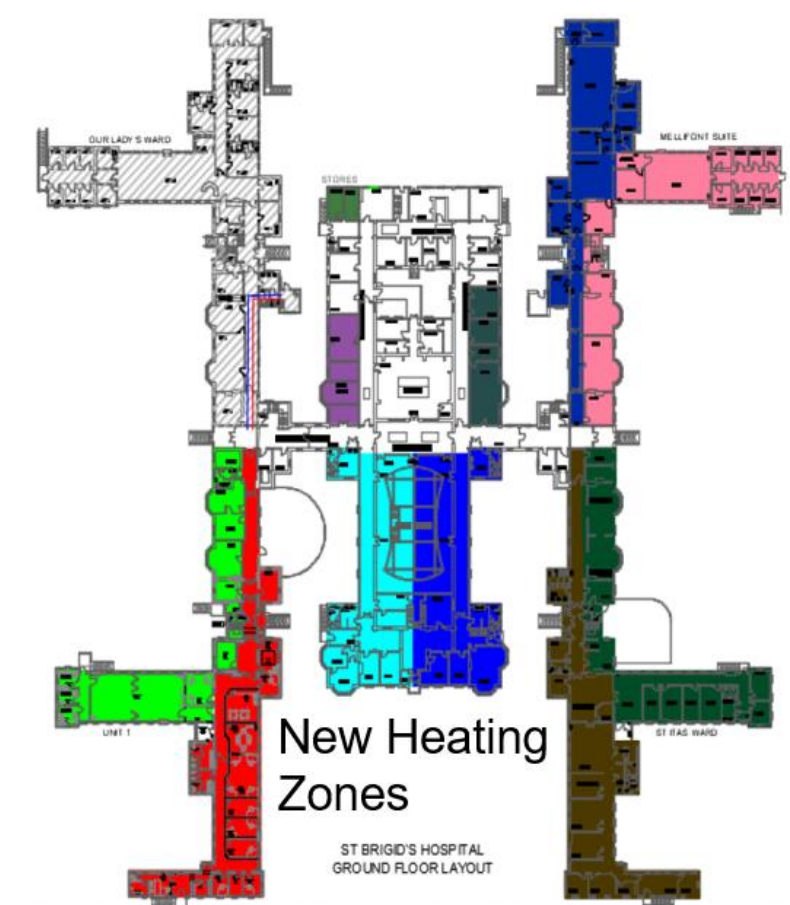
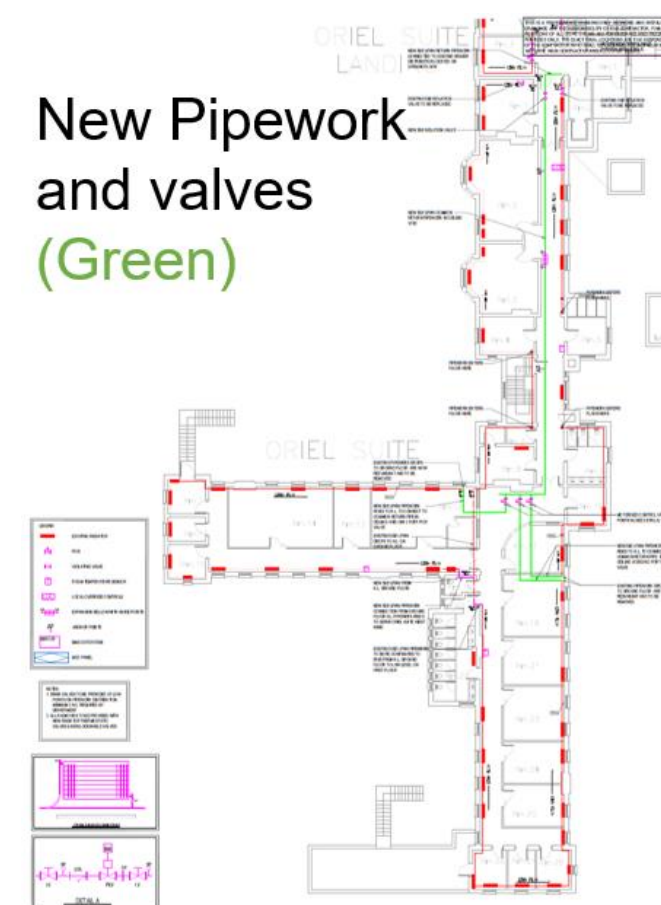
#### Before

- Gas Boilers provided all space heating loads
- Single pipe heating system >60 years old
- Whole building heated 24/7, but only 20% of building is only used outside office hours
- Cast Iron radiators (protected), no controls
- Windows used to control room temperatures

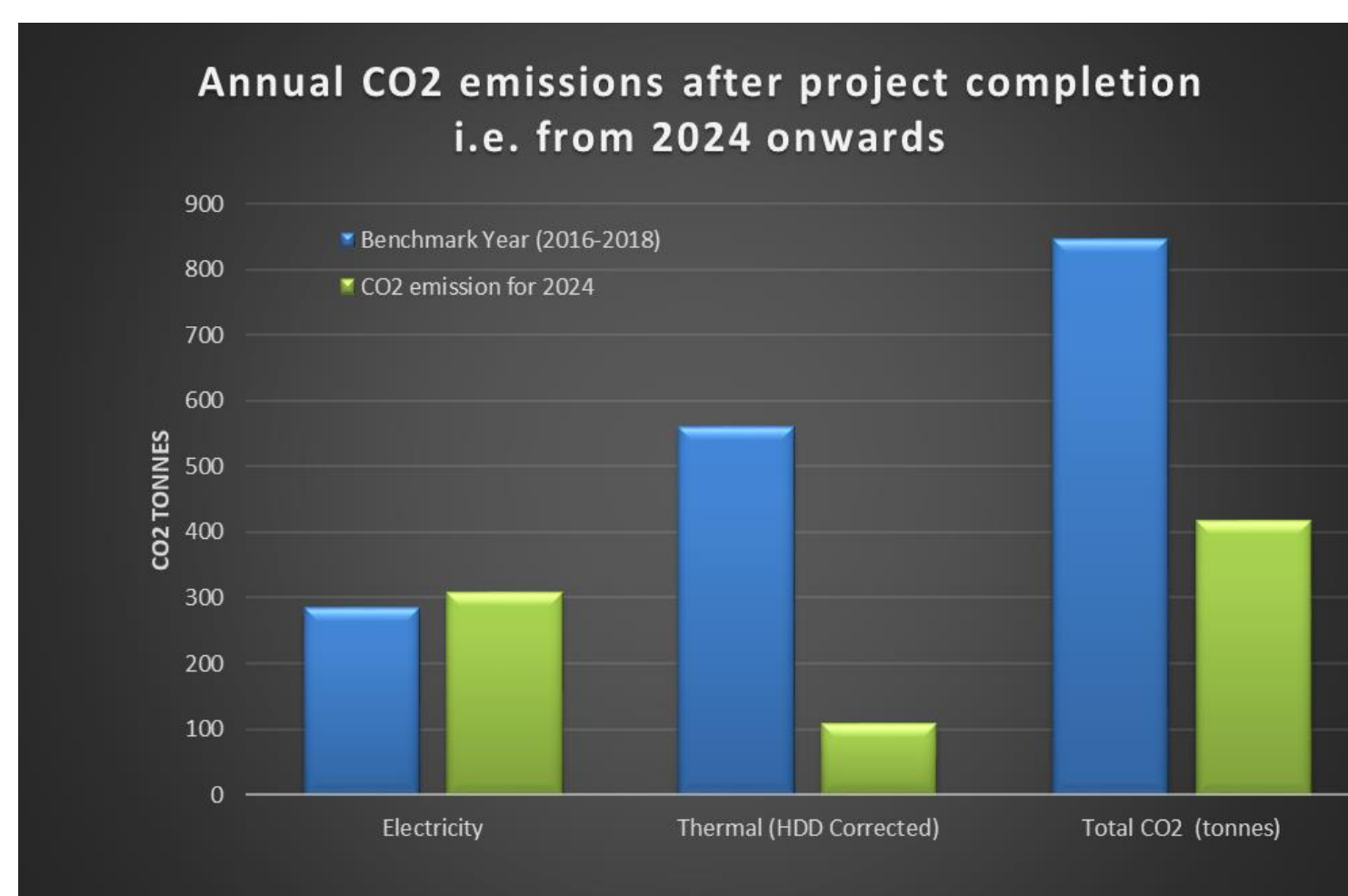
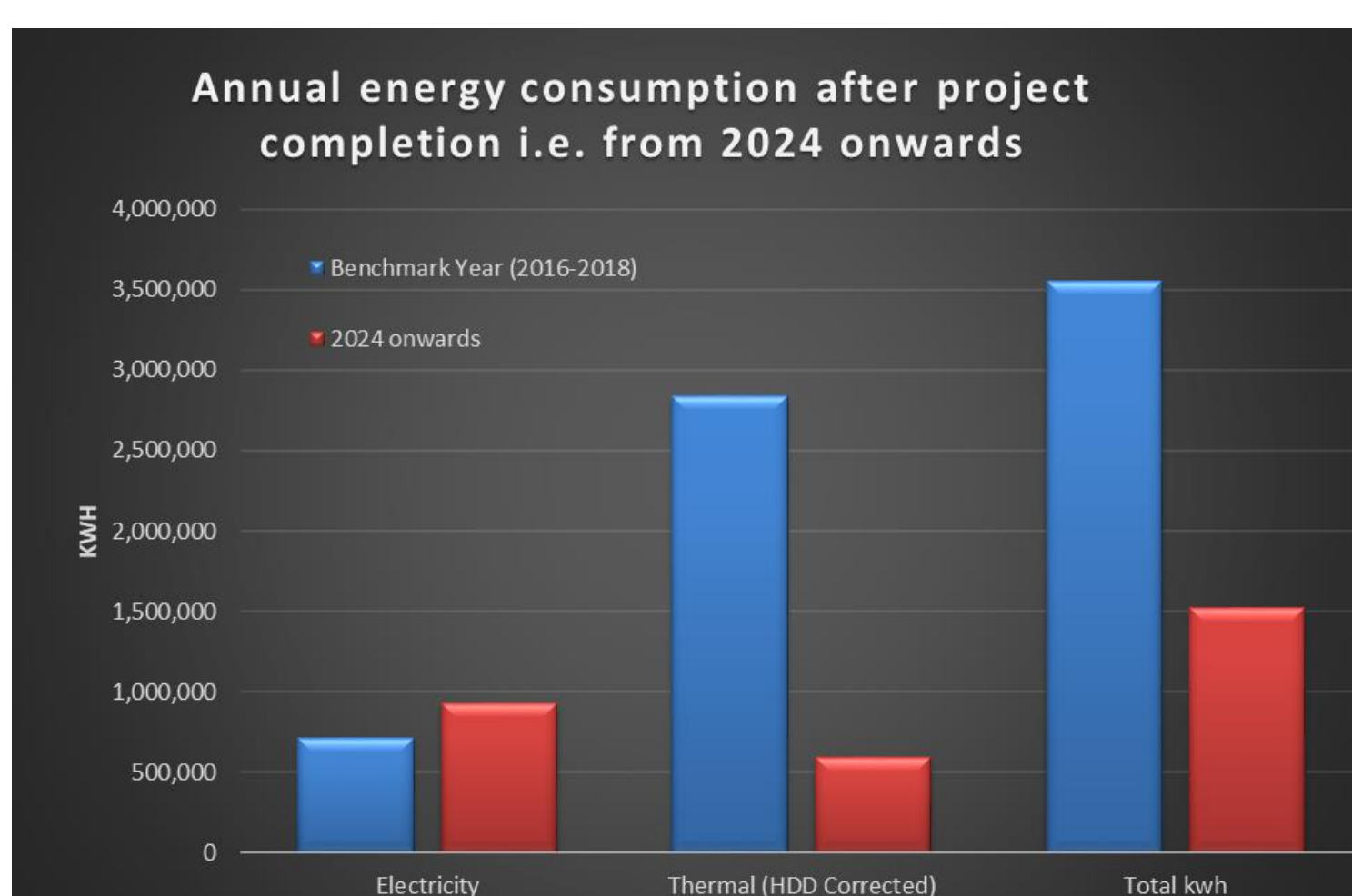


#### After

- New Heat Pumps will deliver >90% heating load
- Strategic installation of new control valves
- Heating system re-zoned into 22 zones. Each zone now has time and temperature controls
- 400 new TRVs fitted to the heritage radiators
- Each room now has reasonably efficient controls



### Total Energy and CO2 Savings for the Campus



**Energy Savings**  
2,028,933 kWh/yr  
57.2 % reduction

**CO2 Savings**  
428 Tonnes/yr  
50.6 % reduction

The site is on track to exceed it's 2030 Climate Action Plan Targets by 2025