

Climate Action Office Significant Energy User (SEU) Metering Project



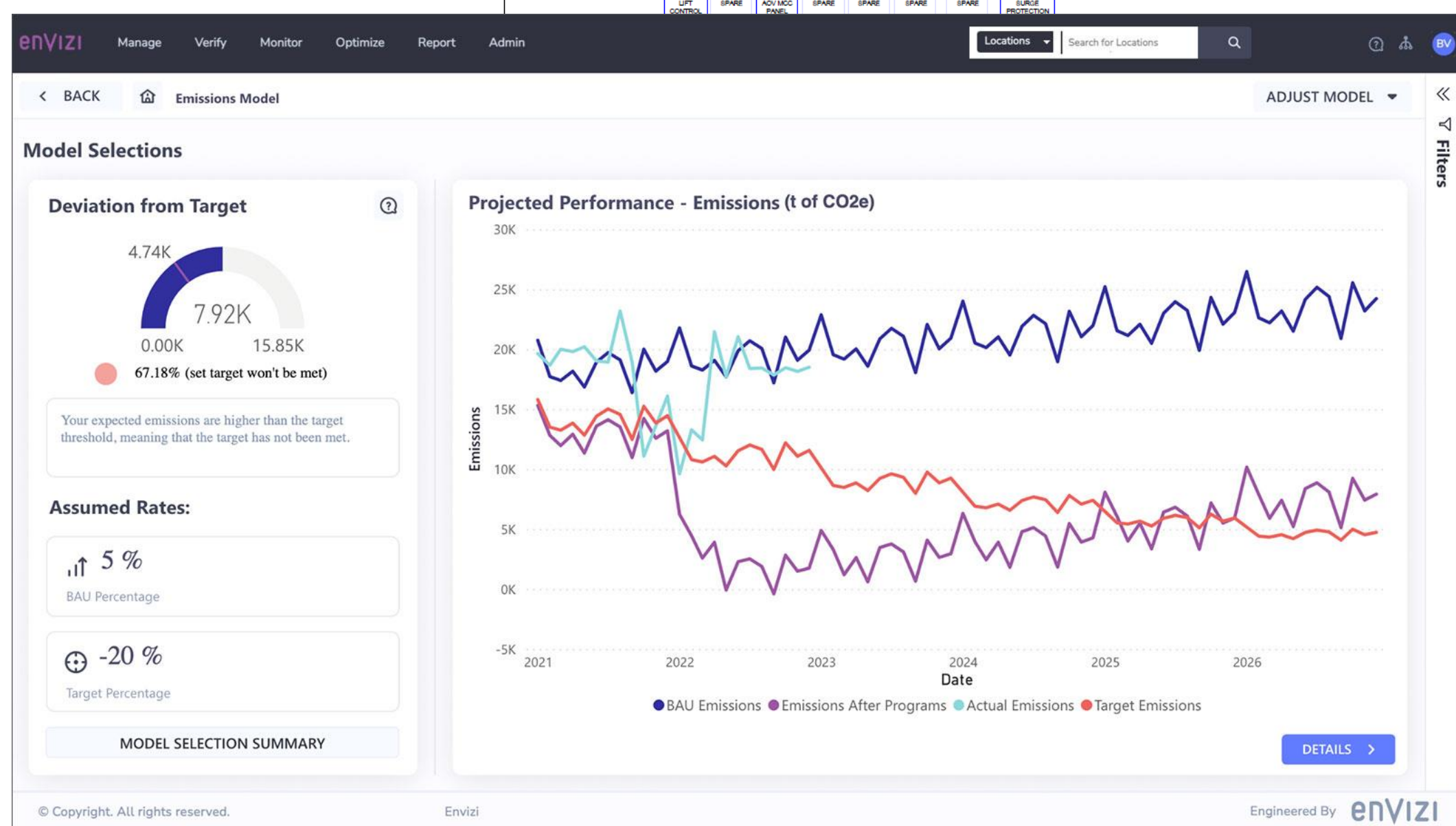
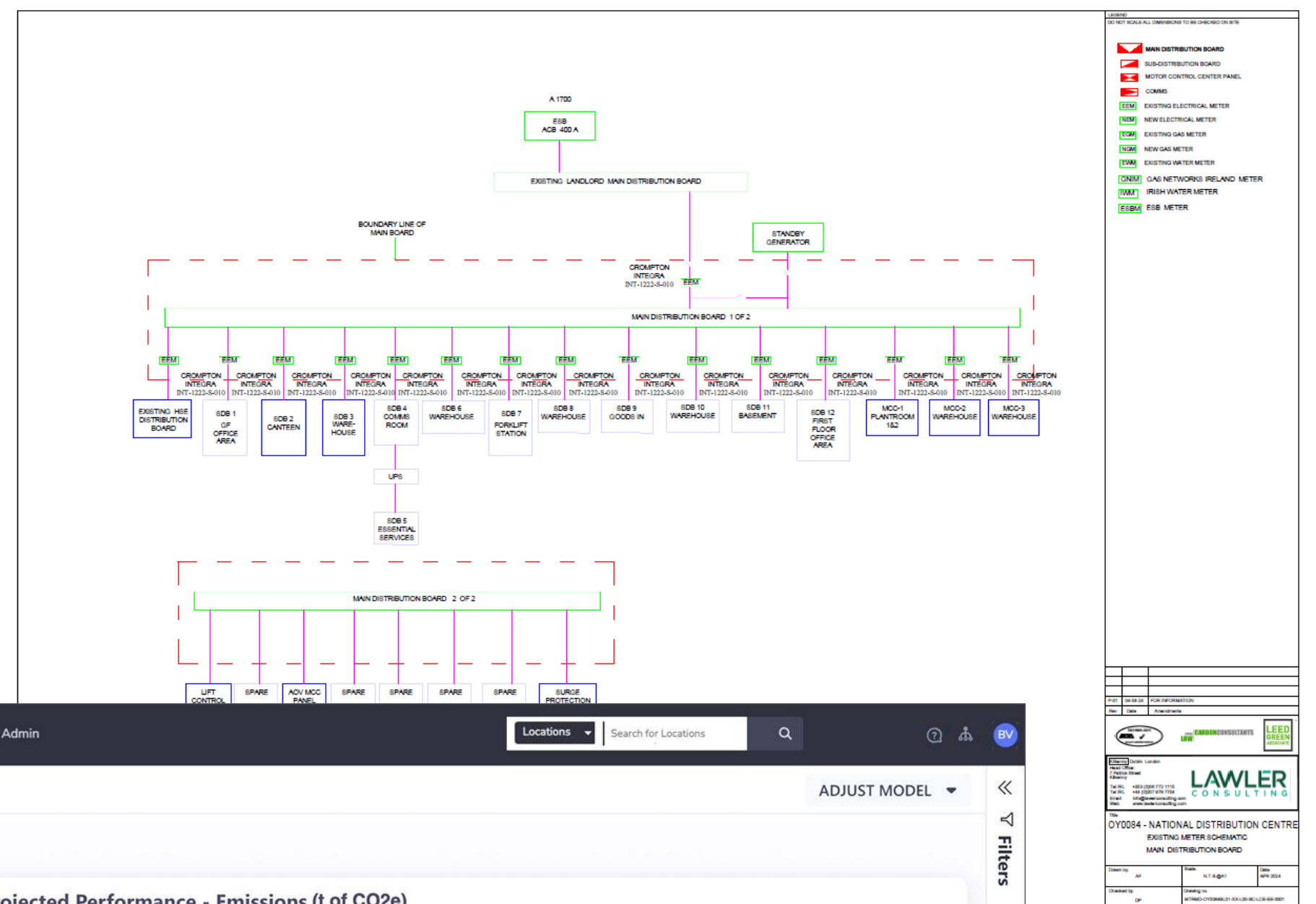
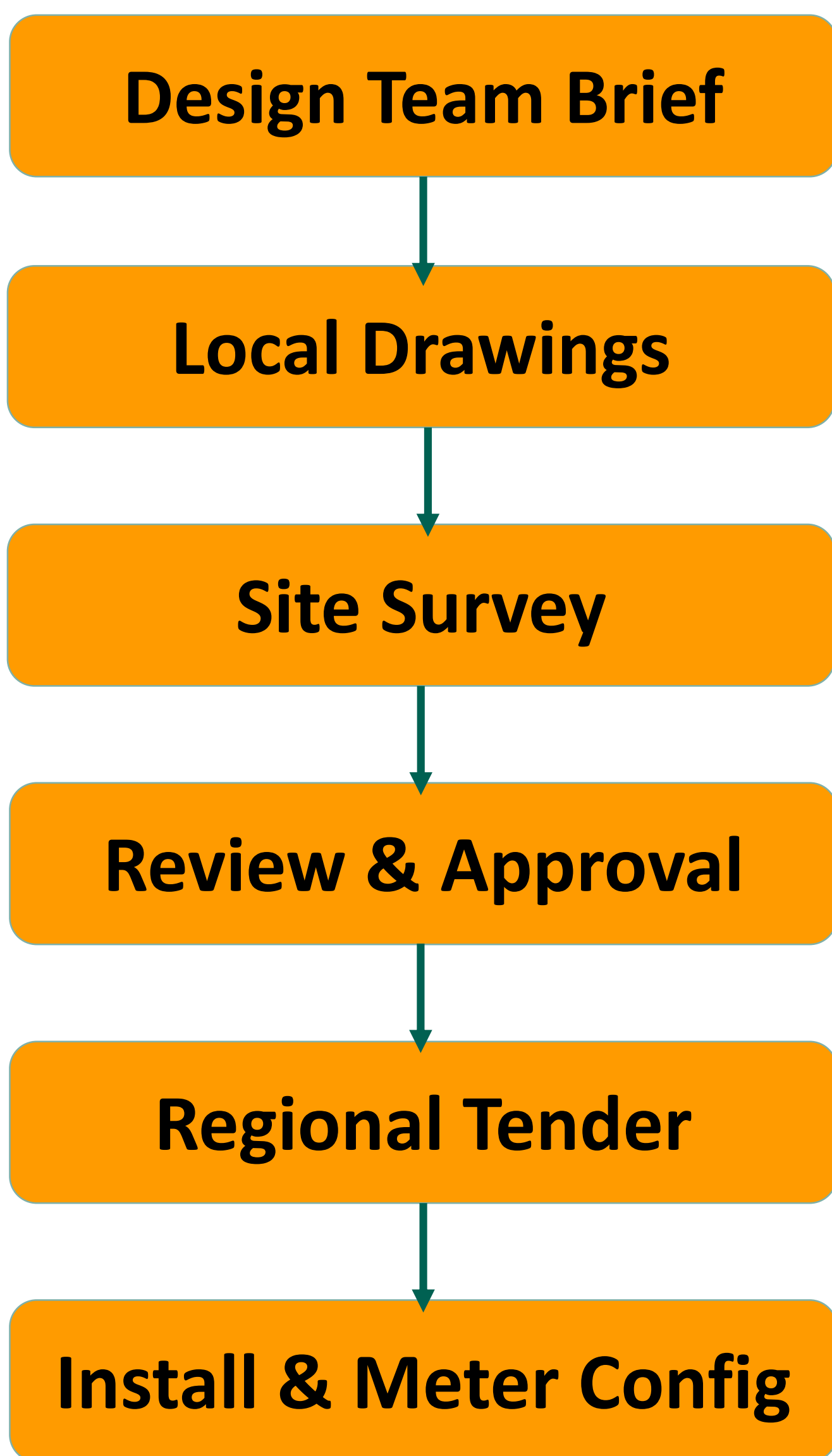
We're taking climate action

Current Challenge

131 sites consume 83.71% of Total HSE Energy

Energy Data for these sites (from individual MPRN, GPRN, bulk fuel tank, etc.) has to be manually collated & interpreted by Energy Officers

No breakdown is available of departmental or building loads to target specific areas



100% surveys complete
38% surveys received
20% surveys approved

Pilot sites complete Q2 2024
131 sites complete Q2 2025

Envizi integration complete Q4 2024

Key Benefits

1. EMS can lead to c. 16% increase in energy savings
2. Real-time reporting
3. Departmental & site benchmarking
4. Link to NEIS O&M module – equipment performance monitoring
5. ISO50001 compliance