

Sligo/Letterkenny NW Office Newtowncunningham PCC EED Approach

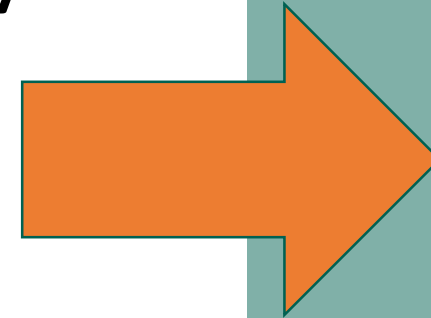


We're taking climate action

New PCC constructed in compliance with the Energy Performance in Buildings Directive for Near Zero Energy Buildings (NZEB)

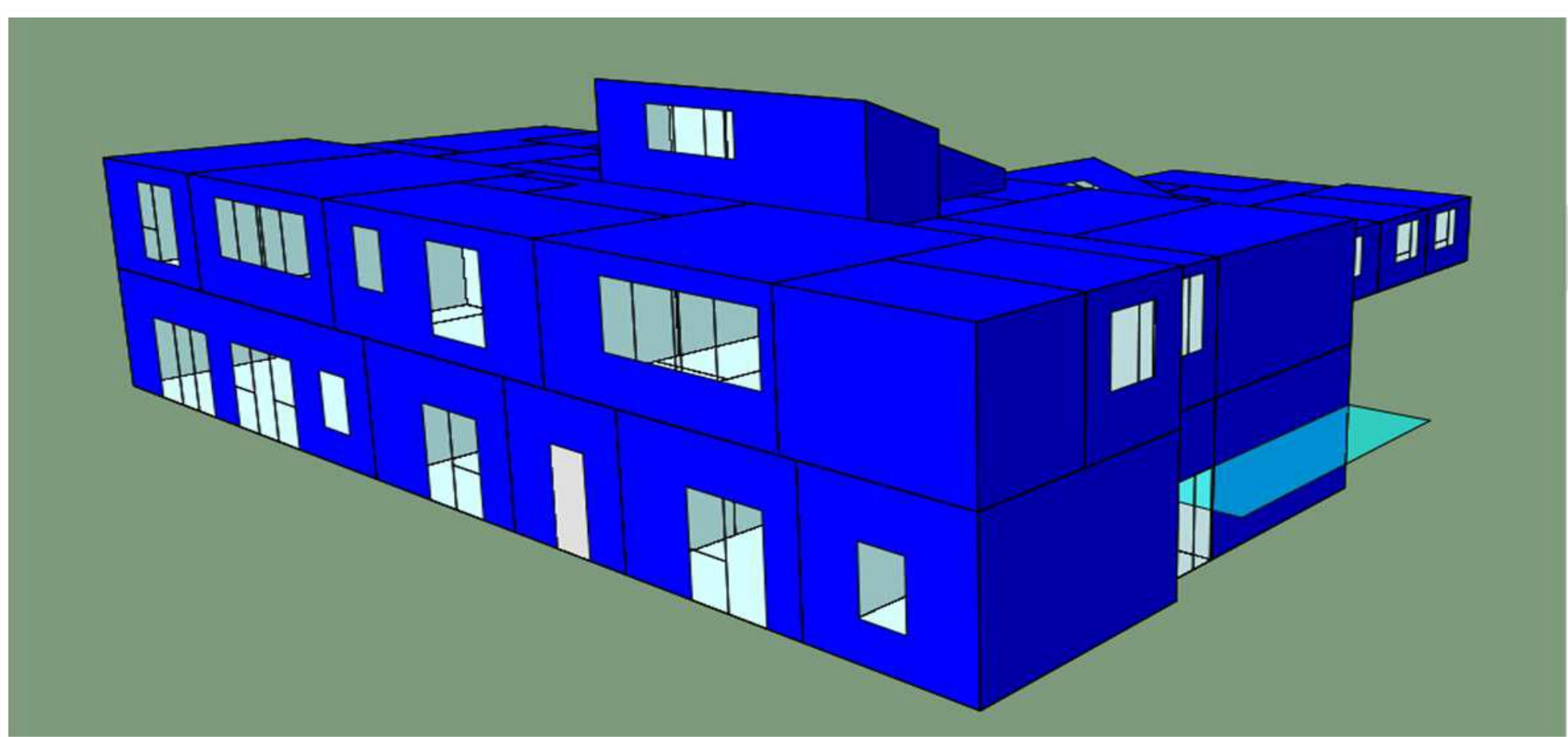
Project Aims and Objectives

- Designed to comply with Part L 2017 (NZEB)
- Achieve a minimum A3 Building Energy Rating
- Fabric First Approach
- Energy Efficient Design Approach
- Dynamic Simulation Modelling



Results

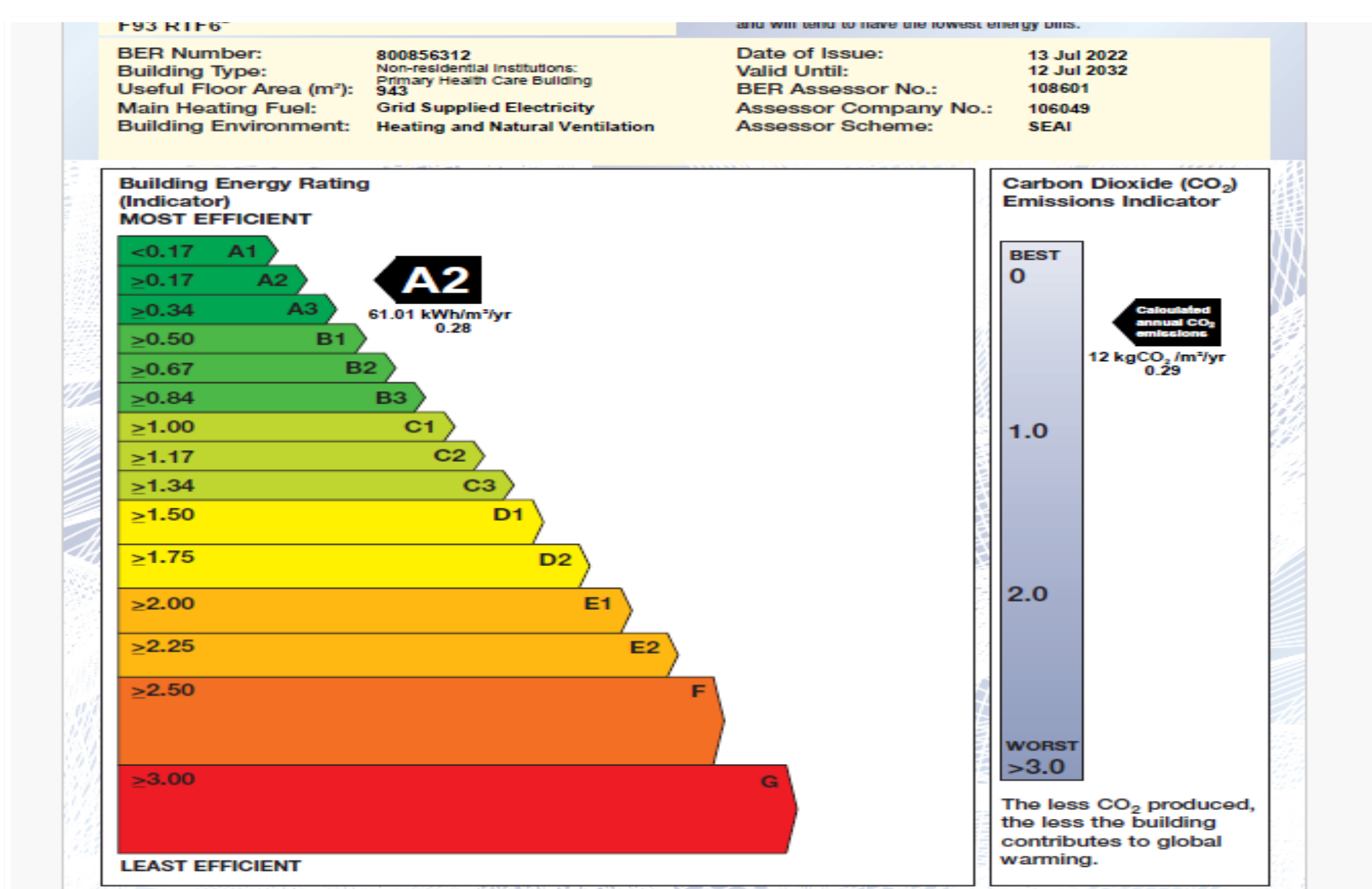
- Compliant with Part L 2017 (NZEB)
- Exceeded Part L Targeted U-Values
- Achieved A2 Building Energy Rating
- Higher Thermal Mass to better regulate internal temperatures
- Natural & Heat Recovery Ventilation
- ASHP Pump Underfloor Heating System
- BMS Controls and Energy Metring
- No Fossil Fuel Heating Source



High Performing Building
61kwh/m2/year

Low CO2 emissions
12kg/CO2/m2/year

Air tightness
3.95/50Pa/m3



Key Learning

- Green Field Site Benefits
- PV installation considered negligible benefit on energy usage
- Importance of HSE Maintenance and Servicing Contracts
- Infection Control Benefits
- EDD Approach relatively new
- Fall down on role and responsibilities of EDD Owner

