

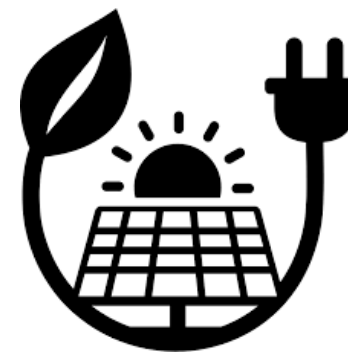
Cherry Orchard Office

Naas Ambulance Base

Road to Decarbonisation



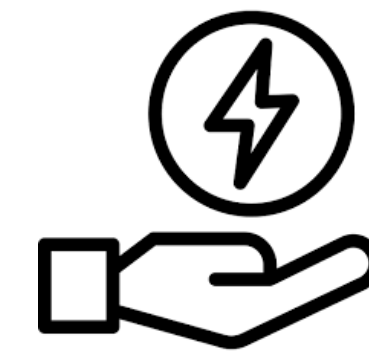
We're taking climate action



Renewable Energy



Lighting Upgrades



Behavioural Change

The integration of Solar Panels, LED Lighting Upgrade, Electric Vehicle Charge Points and Behavioural Change Initiatives within NAB has yielded valuable insights and lessons that can inform future sustainability efforts.

Behavioural Change

10 % Saving of 921 kWh
2023

LED Lighting

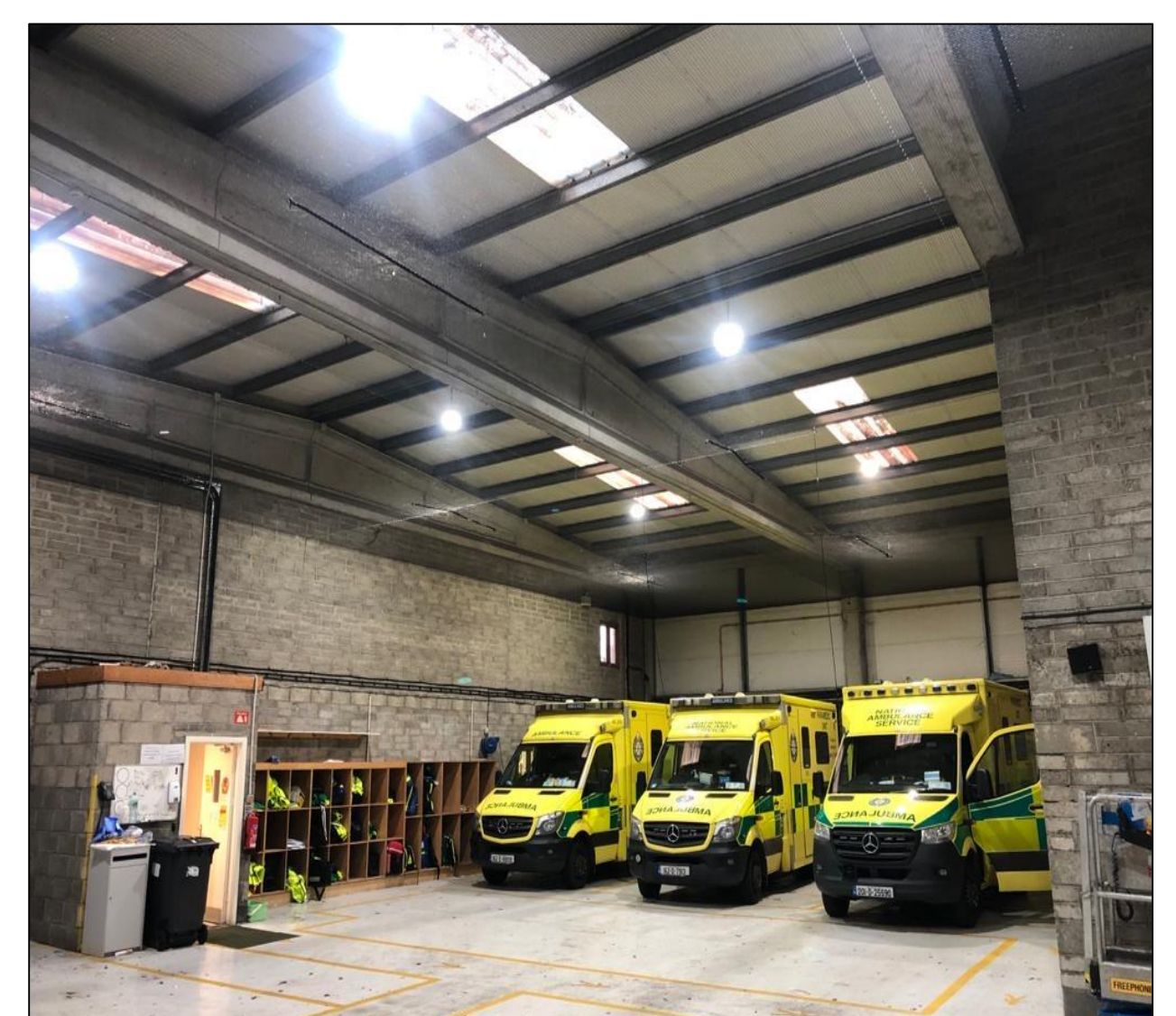
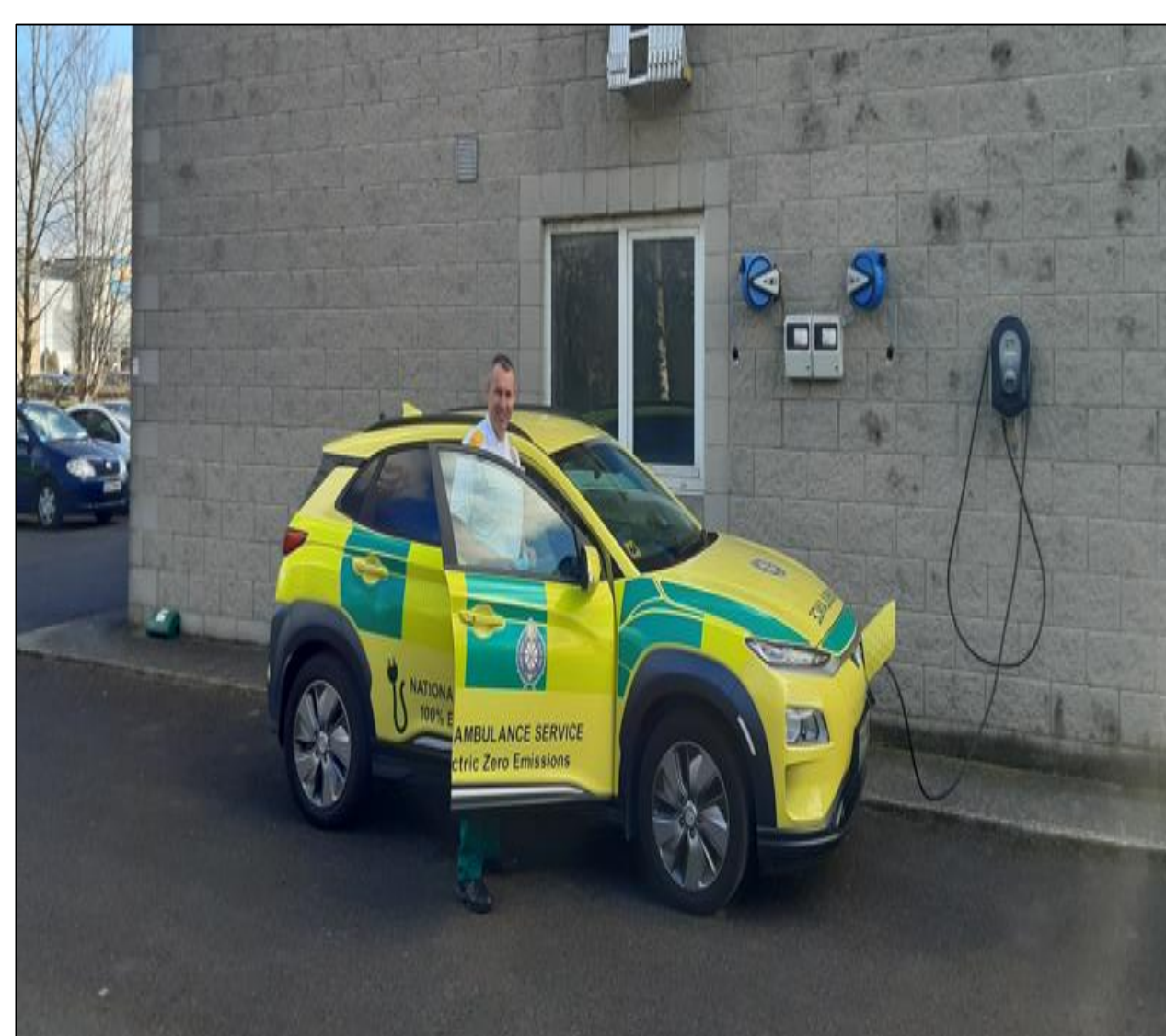
Capital Cost: € 9,804
Saving: 22,831 kWh/yr

EV Charge Points

Two Charging Points on site

Solar PV

Annual Saving: 9,089 kWh



11.5 kW peak of Solar Panels Installed on Base Roof 2020

Generates
49%
of the total electricity
demand 2023

9,088.74 kWh
Reduction in Grid
Generated Electricity 2023

6 Tonnes
of CO2 Emissions offset
annually

Based on the calculated renewable energy output of 269,025kWh over the 25 years lifespan of the solar panel array.

The emission reduction based on using carbon electricity emission factor of 324.5g/kWh and PEF of 2.08.

$269,025 \times 324.5 \times 2.08 / 10^6 = 181.58$ Tonnes of CO₂e over 25 years.