

CHECK THE BIN LABELS BIN IT RIGHT!

RECYCLING



Dry, clean materials only.
No liquid or dirty
contaminated materials.



HSE Capital & Estates
Climate Action and Sustainability Office
www.hse.ie/sustainability • climate.action@hse.ie

 GreenHealthcare



Hard/Soft Plastic

Packaging, bottles, trays, cups,
wrapping and film



Paper

Packaging, newspapers, magazines
and non-confidential office paper



Cardboard

Boxes (flatten), trays, etc.



Metal

Food tins, drink cans, etc.



HSE Capital & Estates
Climate Action and Sustainability Office
www.hse.ie/sustainability • climate.action@hse.ie



GreenHealthcare

CHECK THE BIN LABELS BIN IT RIGHT!

ORGANIC WASTE



Food only. **No plastic.**
Put packaging in the
recycling bin.



HSE Capital & Estates
Climate Action and Sustainability Office
www.hse.ie/sustainability • climate.action@hse.ie



Plate waste



Prepared food



Napkins &
compostable ware



Teabags, peelings, bones
& other unavoidable
food waste



HSE Capital & Estates
Climate Action and Sustainability Office
www.hse.ie/sustainability • climate.action@hse.ie



GreenHealthcare

CHECK THE BIN LABELS BIN IT RIGHT!

GENERAL WASTE



No healthcare risk waste.



HSE Capital & Estates
Climate Action and Sustainability Office
www.hse.ie/sustainability • climate.action@hse.ie

GreenHealthcare



PPE

Gloves, disposable aprons and gowns,
face masks, shoe covers and hats



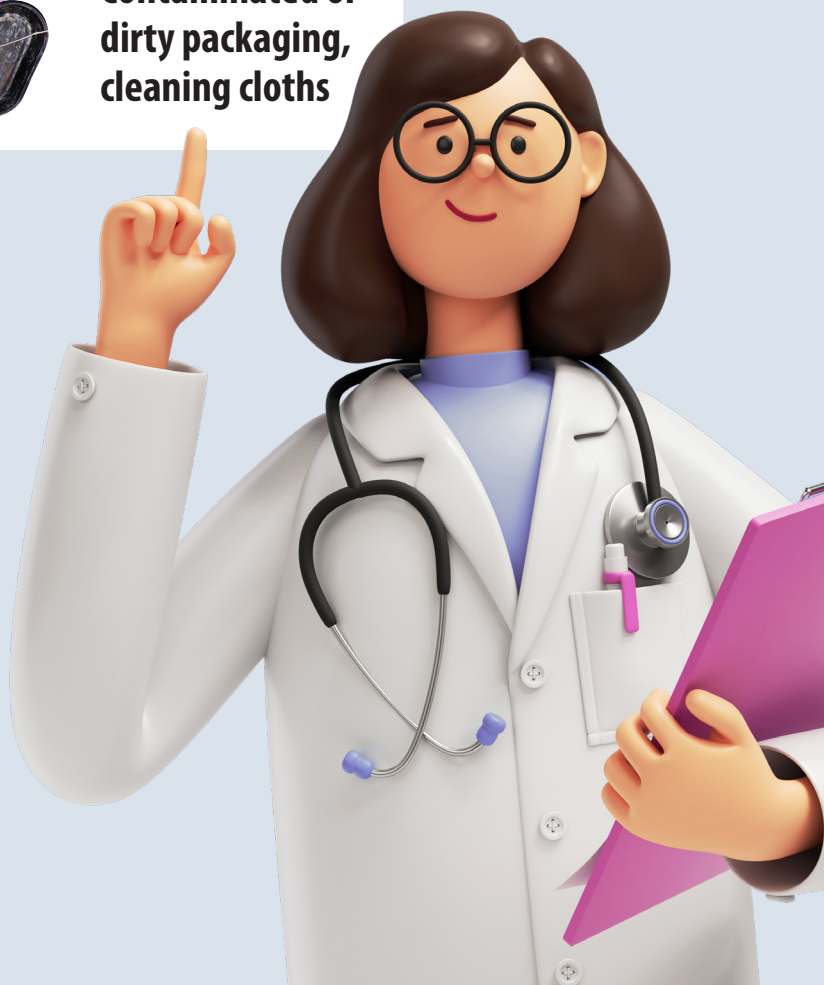
Incontinence wear



Tissue paper



Contaminated or dirty packaging, cleaning cloths



HSE Capital & Estates
Climate Action and Sustainability Office
www.hse.ie/sustainability • climate.action@hse.ie



GreenHealthcare